

Unit F22 Photon House, Percy Street, Leeds, LS12 1EG
Tel: 0113 487 5850
Email: leeds@ascendproperties.com
www.ascendproperties.com

Ascend

Built on higher standards



Victoria Riverside, Atkinson Street, Leeds, LS10

£1,150 PCM

This stunning mill conversion is just 11 minutes from Leeds city centre and is ready for you to drop your bags and move in straight away.

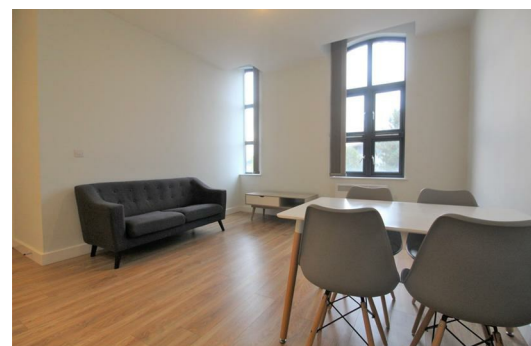
Due to the fantastic location, these apartments are perfect for young working professionals and students wanting to be in the thick of all the action. Situated just 1 mile from Leeds city centre, you'll have the mainline train station just 6 minutes away along with Trinity Leeds shopping centre offering a wide range of high street shops and a cinema. Leeds Beckett University and the University of Leeds are both just 2 miles away too.

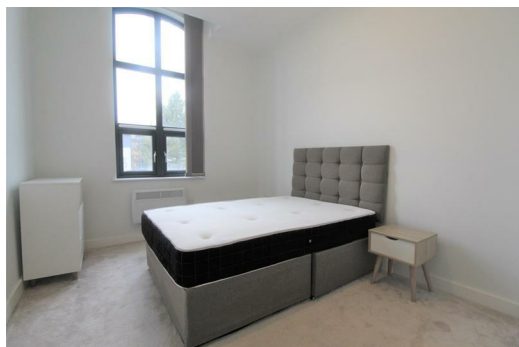
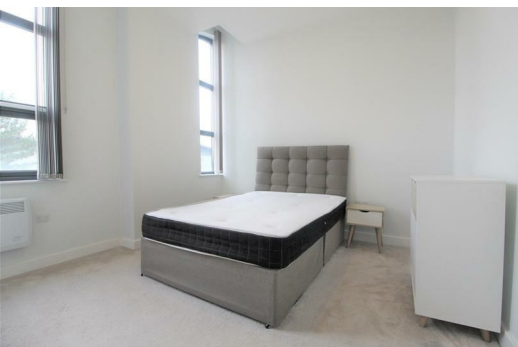
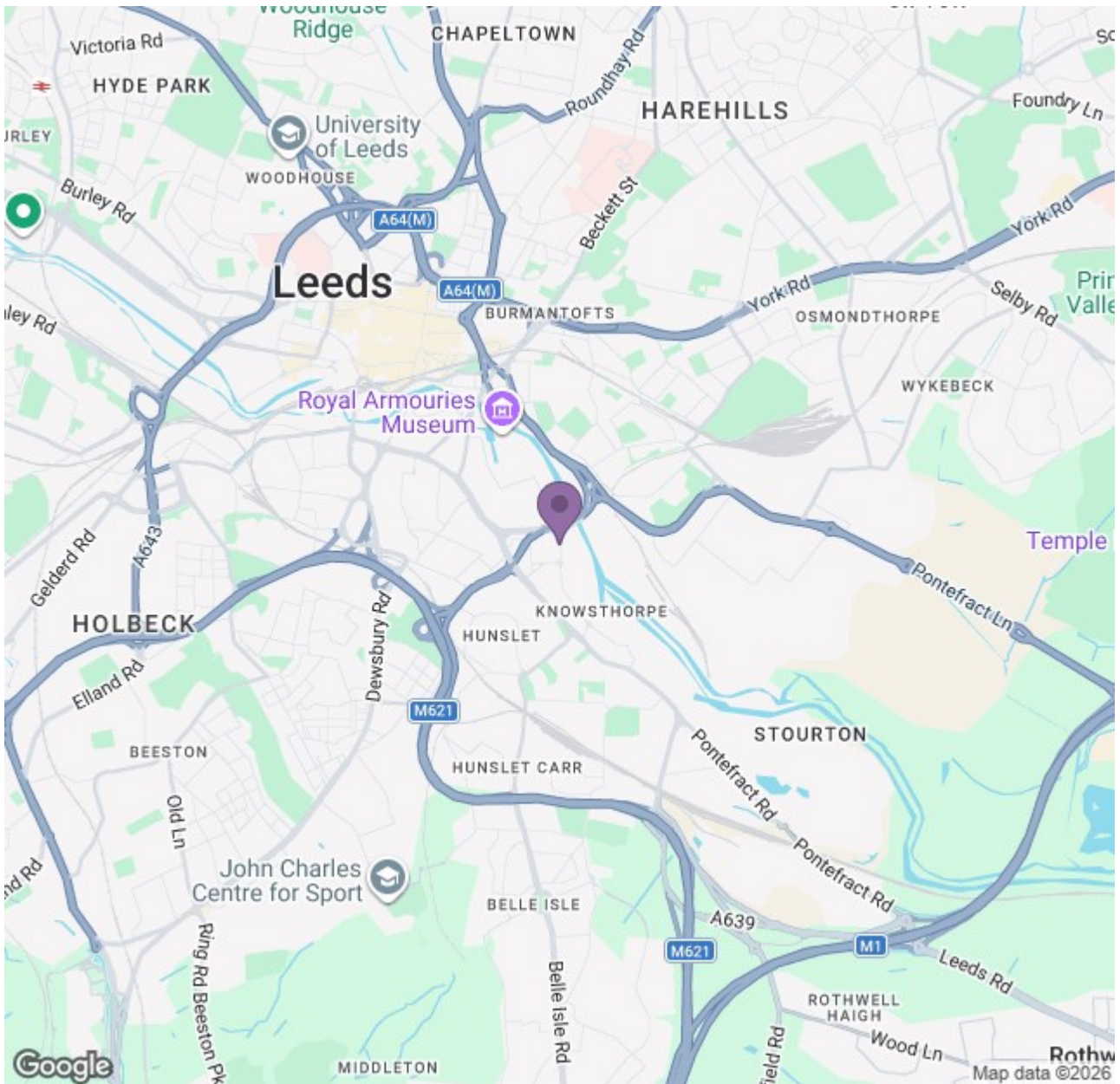
This landmark development will include a range of one and two bedroom apartments – all featuring sleek open-plan interiors and an incredibly unique interior design. Apartments will also benefit from on-site parking -a huge bonus.

That's not all. With plenty of regeneration happening in the nearby area, Leeds is set to double in size. This is one of the most exciting places to live right now!

Don't miss out on this fantastic opportunity to live in this stunning mill development – we guarantee these apartments will be reserved quickly. Make sure to give our team a call today to for more information.

Available Now
Deposit: £1,320
Council Tax Band: A
12 Month Tenancy





Energy Efficiency Rating				Environmental Impact (CO ₂) Rating			
Rating	Score	Band	Score	Rating	Score	Band	Score
A	92-100	A	100	A	100	A	100
B	81-91	B	91	B	81-91	B	91
C	69-80	C	80	C	69-80	C	80
D	55-68	D	68	D	55-68	D	68
E	39-54	E	54	E	39-54	E	54
F	29-38	F	38	F	29-38	F	38
G	1-28	G	28	G	1-28	G	28